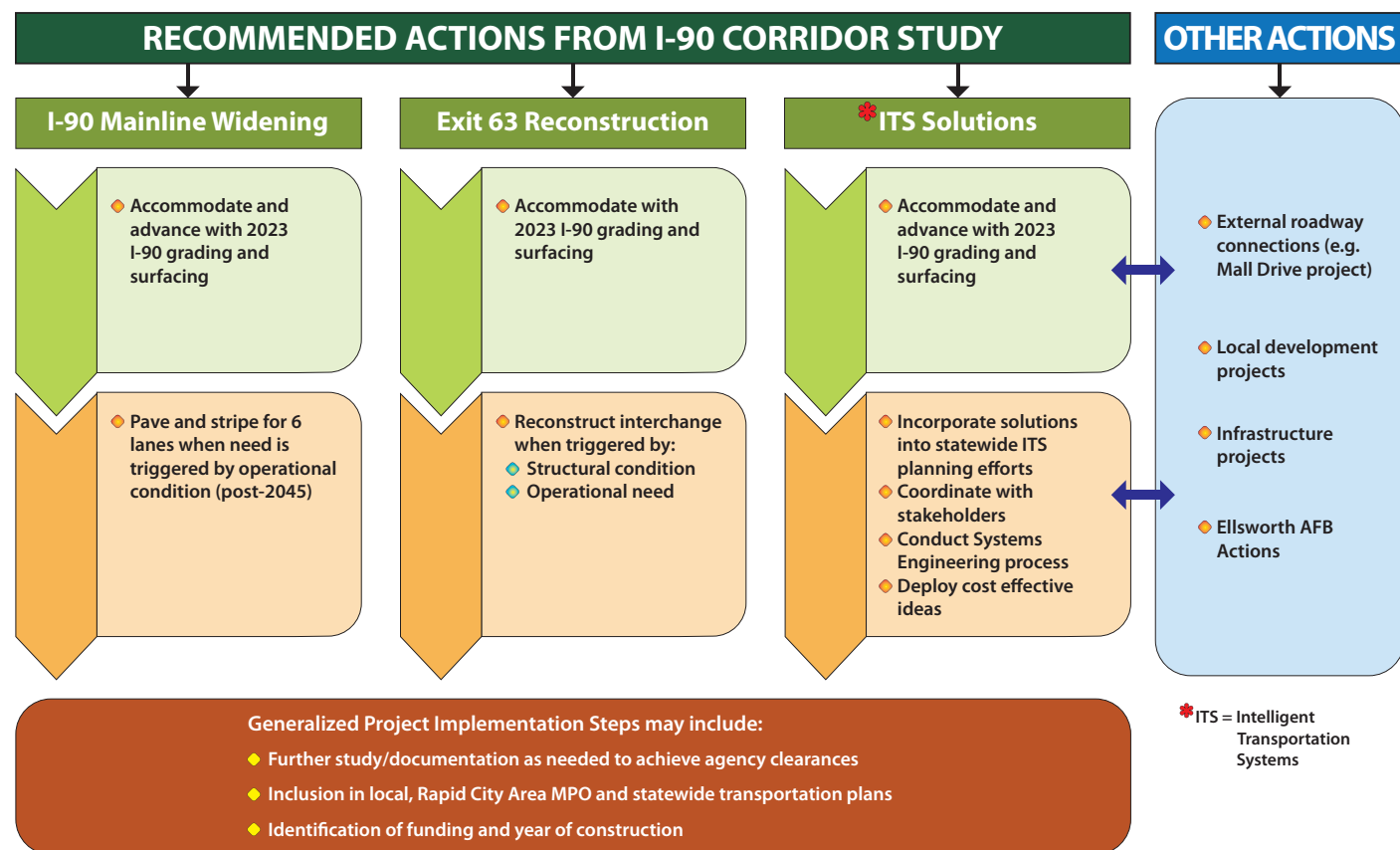




Study Area Project Implementation



City of Box Elder
FHWA
Rapid City Area MPO

Thank you for your interest in the



Exit 61 to Exit 67 Corridor Study

This handout includes some of the displays from the
September 13, 2017 Open House.

All displays may be viewed at www.i90corridor61to67.com

We look forward to your continued involvement in this project!

Next Steps

- ◆ Incorporate public feedback
- ◆ Formulate study recommendations
- ◆ Develop draft and final reports

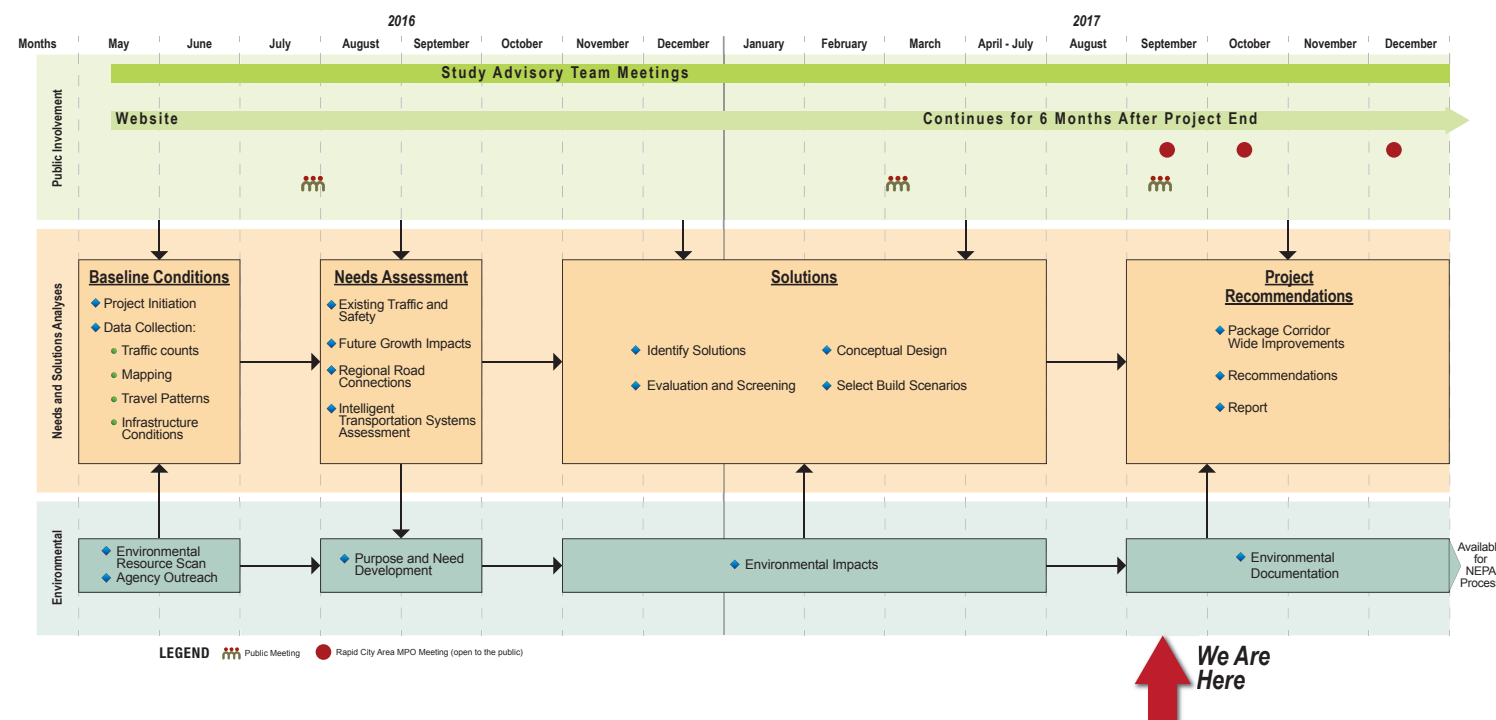
For more information, please contact:

Steve Gramm, PE - Planning Engineer
South Dakota Department of Transportation
(605)773-6641
steve.gramm@state.sd.us

Lyle DeVries - Consultant
Felsburg Holt & Ullevig
303.721.1440
lyle.devries@fhueng.com

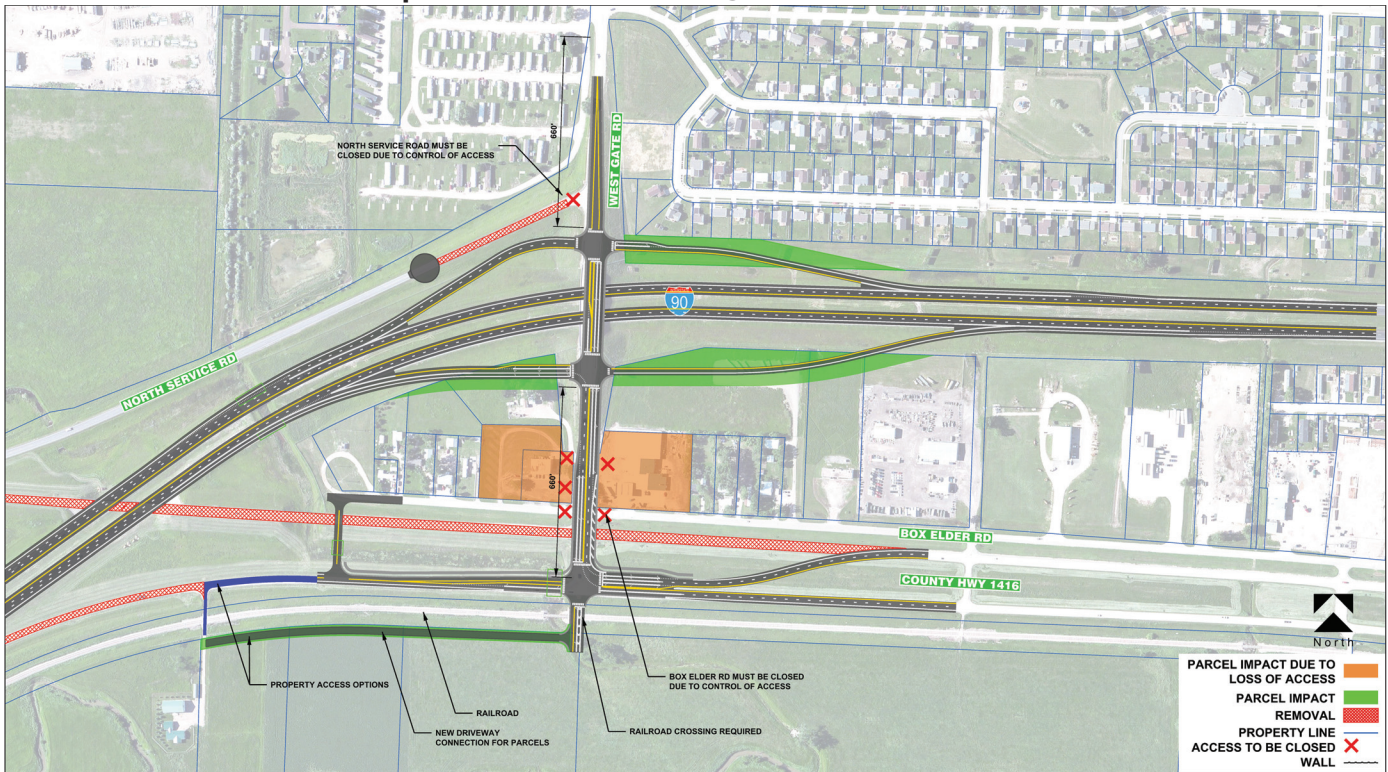
Or visit the website:
www.i90corridor61to67.com

Schedule/Work Plan

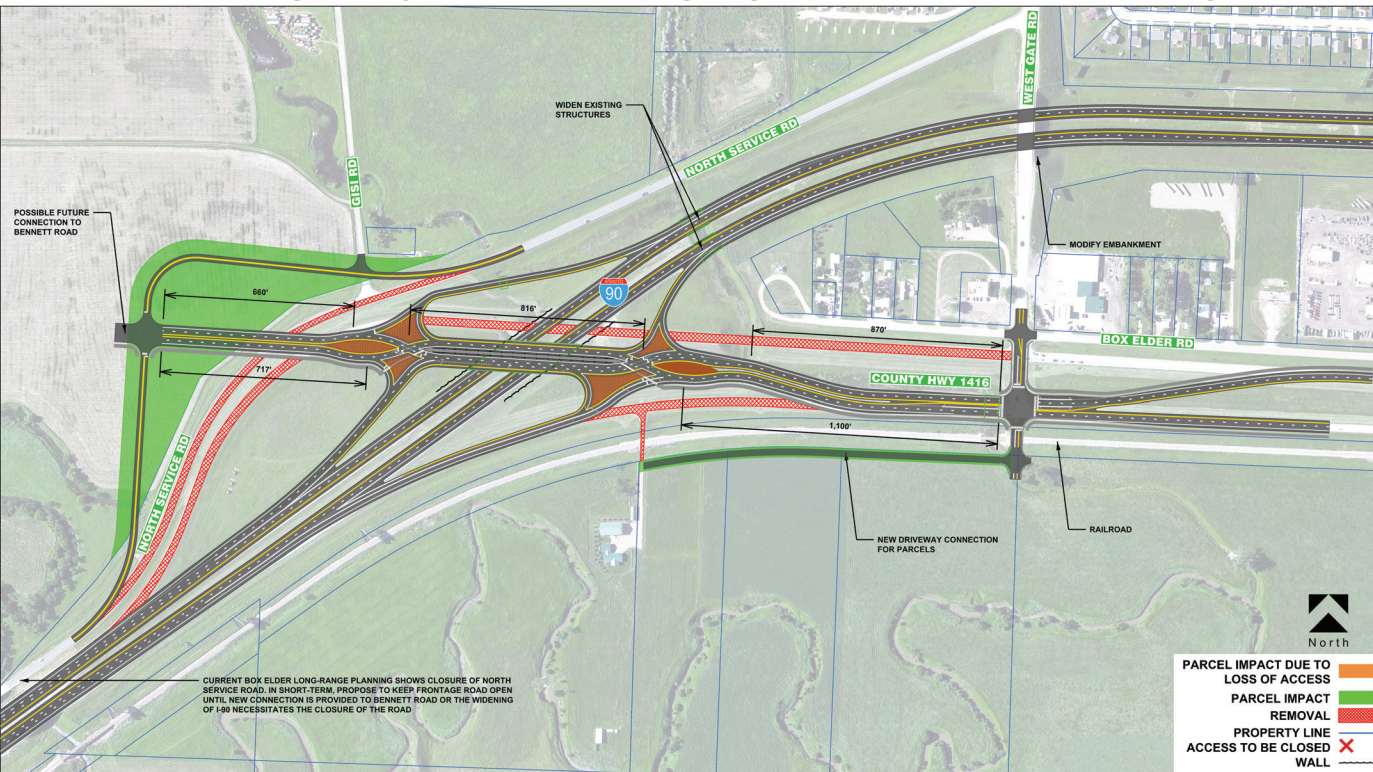


Feasible Alternatives for Exit 63 and I-90

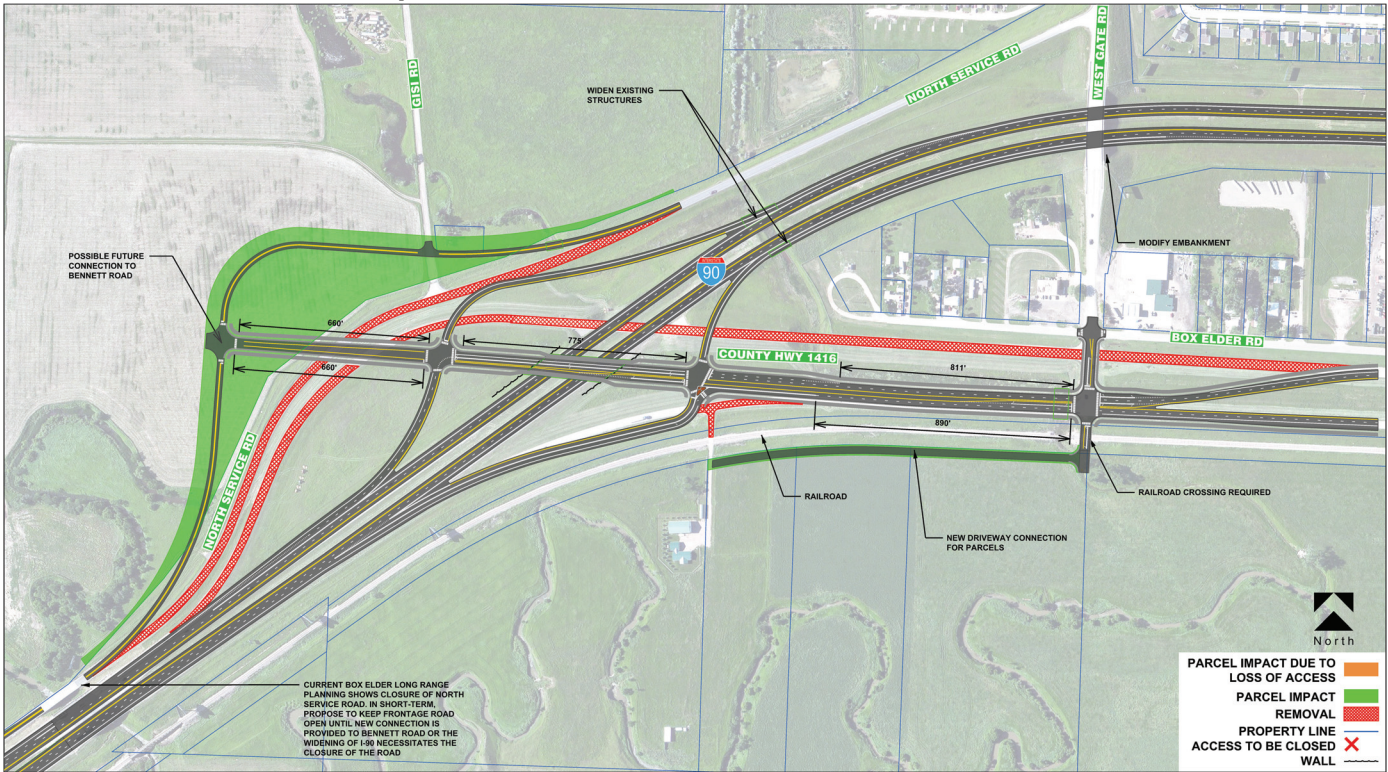
Exit 63 Feasible Option 1 - Westgate Diamond



Exit 63 Feasible Option 4b - Highway 1416 Diverging Diamond Interchange (DDI)



Exit 63 Feasible Option 4a - Highway 1416 Diamond



I-90 Mainline Widening

