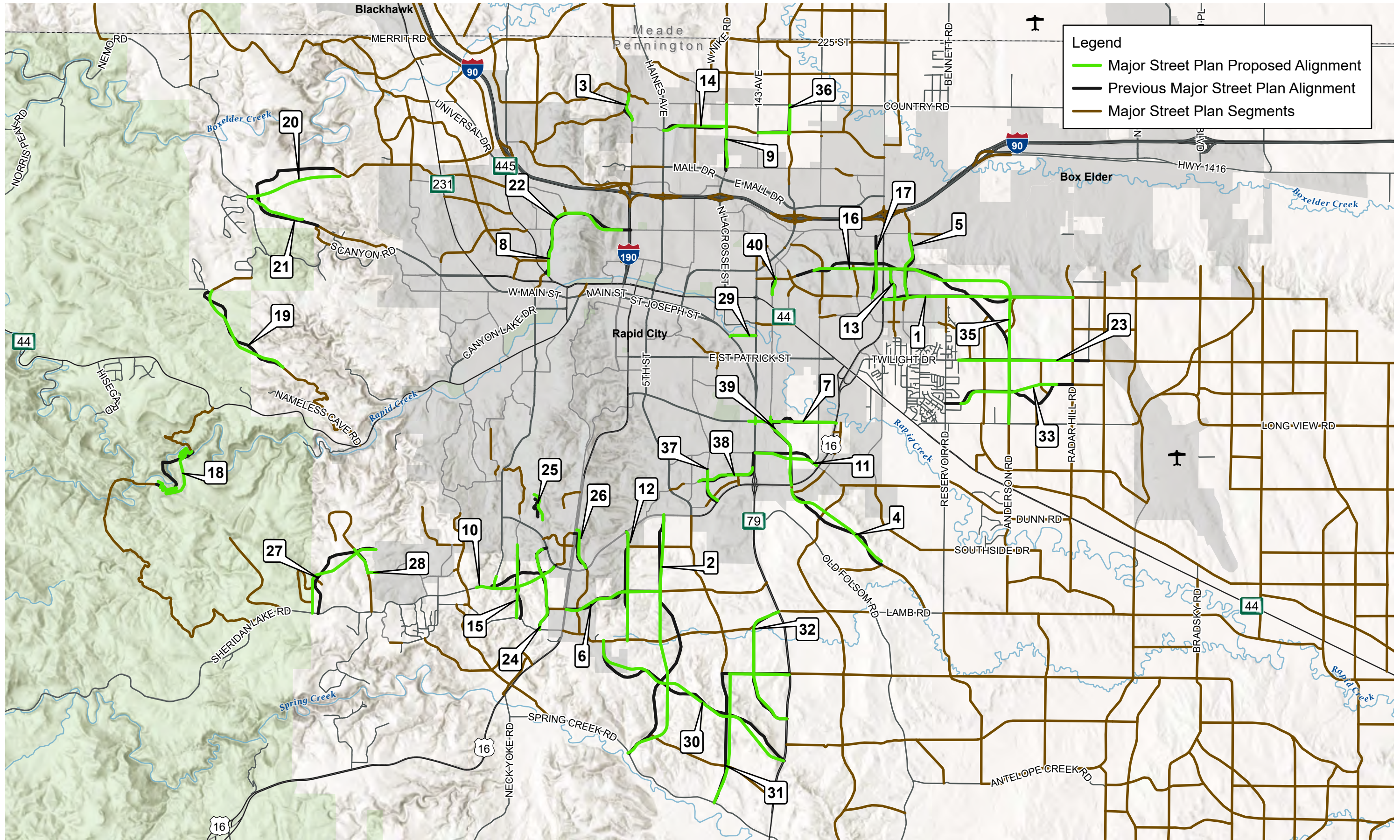


# Major Street Plan Analysis and Update

## Appendix A

Plan and Profiles





**Legend**

- Major Street Plan Proposed Alignment
- Previous Major Street Plan Alignment
- Major Street Plan Segments

**MAJOR STREETS PLAN PROPOSED ALIGNMENTS**

0 2 Miles

ISXF-SRV01ENGISGPROJETS\CITY\_OF\_RAPID\MSP\_ANALYSIS\_10368391\MAP\_DOCS\RAPIDCITY\_MSP\_PRRORITIZATION\_ALIGNMENTS.APRX DATE: 7/19/2024

# Major Street Plan Analysis and Update

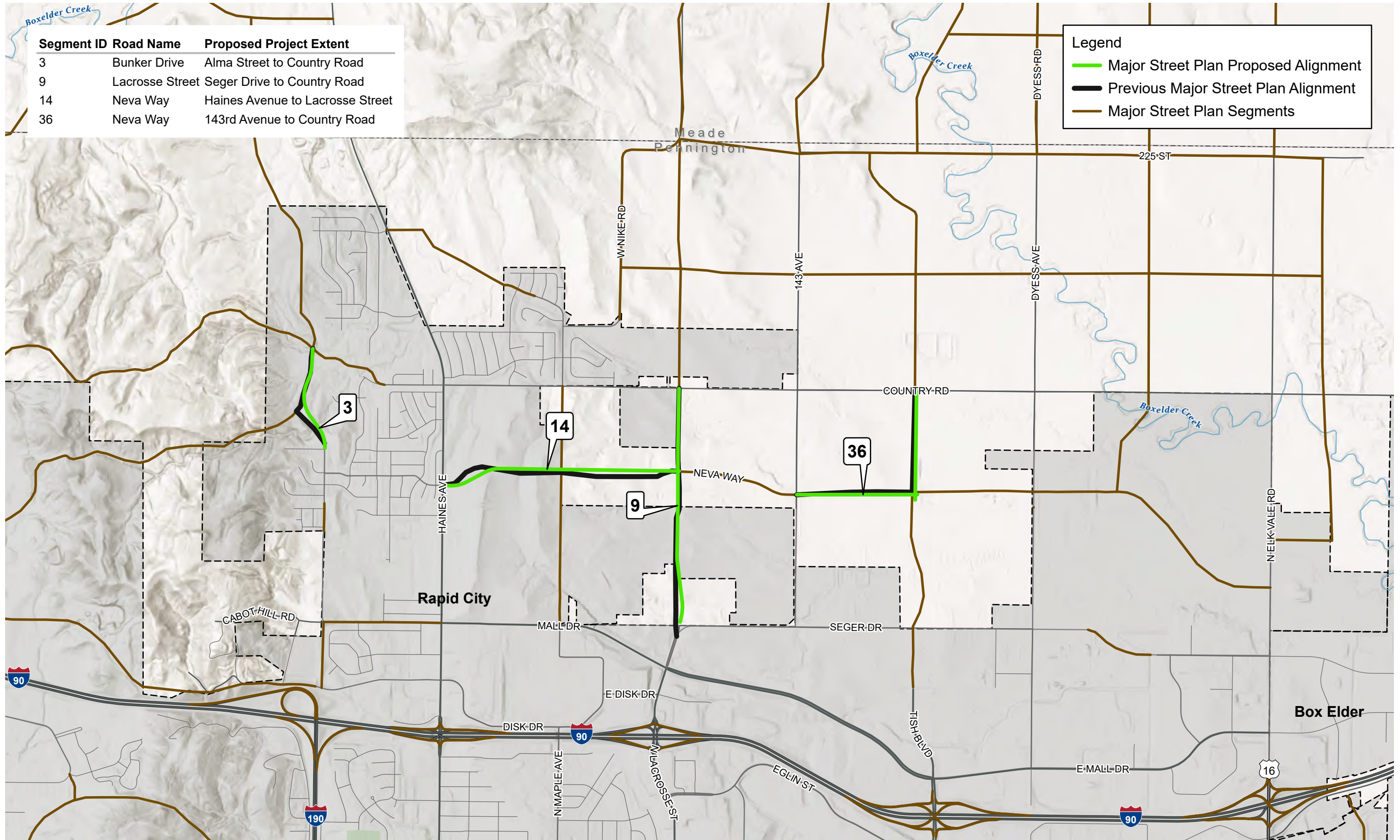
## Northern Growth Area



Segment ID	Road Name	Proposed Project Extent
3	Bunker Drive	Alma Street to Country Road
9	Lacrosse Street	Seger Drive to Country Road
14	Neva Way	Haines Avenue to Lacrosse Street
36	Neva Way	143rd Avenue to Country Road

**Legend**

- Major Street Plan Proposed Alignment
- Previous Major Street Plan Alignment
- Major Street Plan Segments



0 0.5 Miles

**STREET PLAN PROPOSED ALIGNMENTS  
NORTHERN GROWTH AREA**

# Bunker Drive

## Alma Street to Country Road

Classification: Collector

Corridor Length: 2,365 FT

### Estimated Quantities

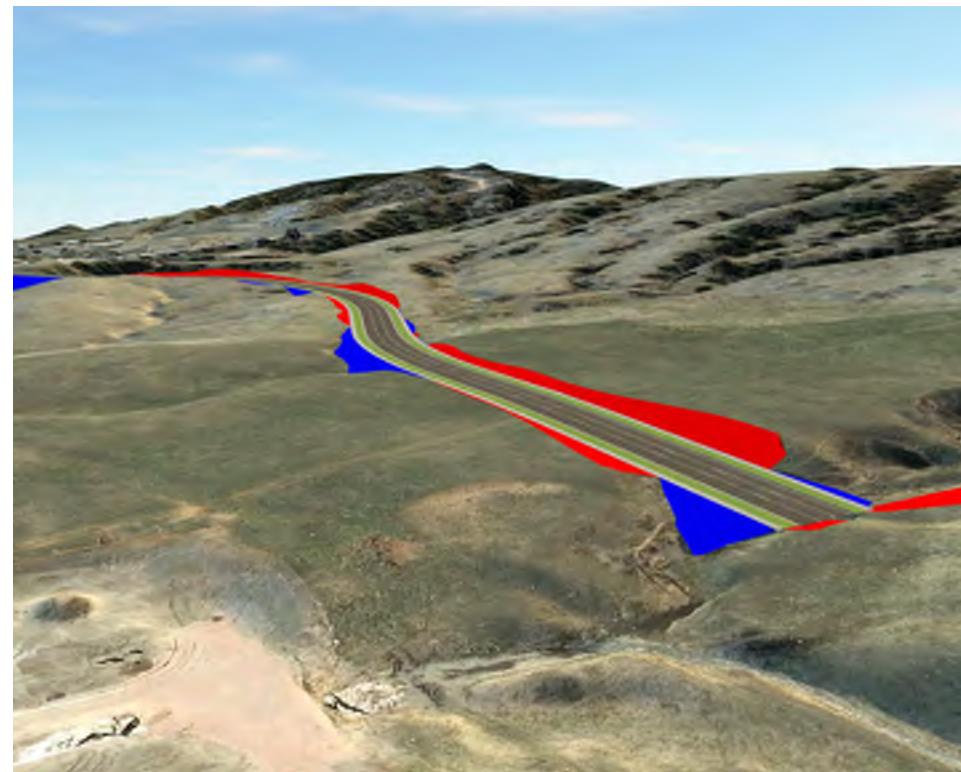
Road Surface: 8,409 SY

Earthwork Cut (Red): 16,196 CY

Earthwork Fill (Blue): 46,600 CY

### Segment Considerations:

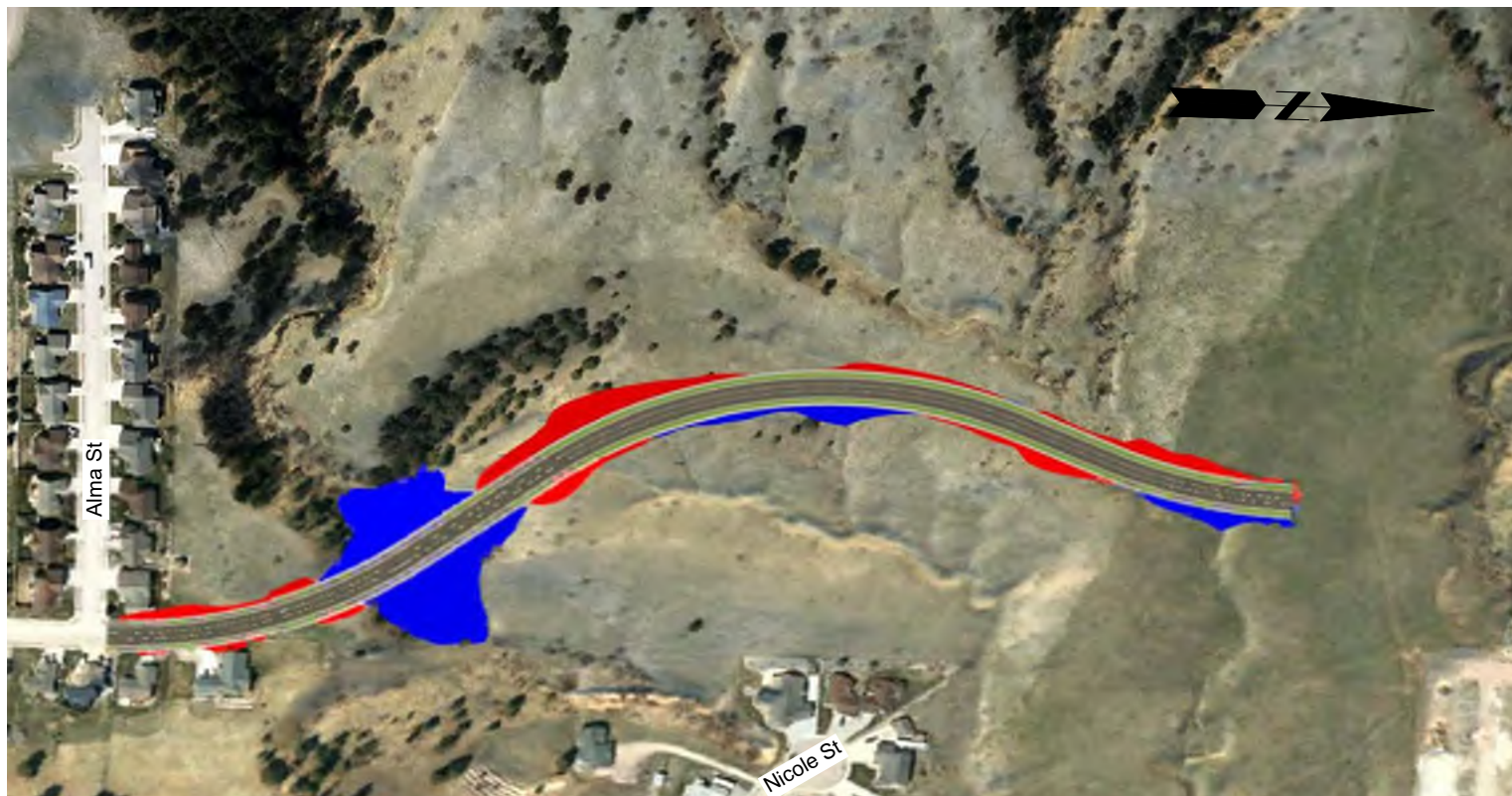
- Possible Retaining walls to limit existing developed property impacts.
- Design speed – 35 MPH.



Isometric looking south at station 24+00



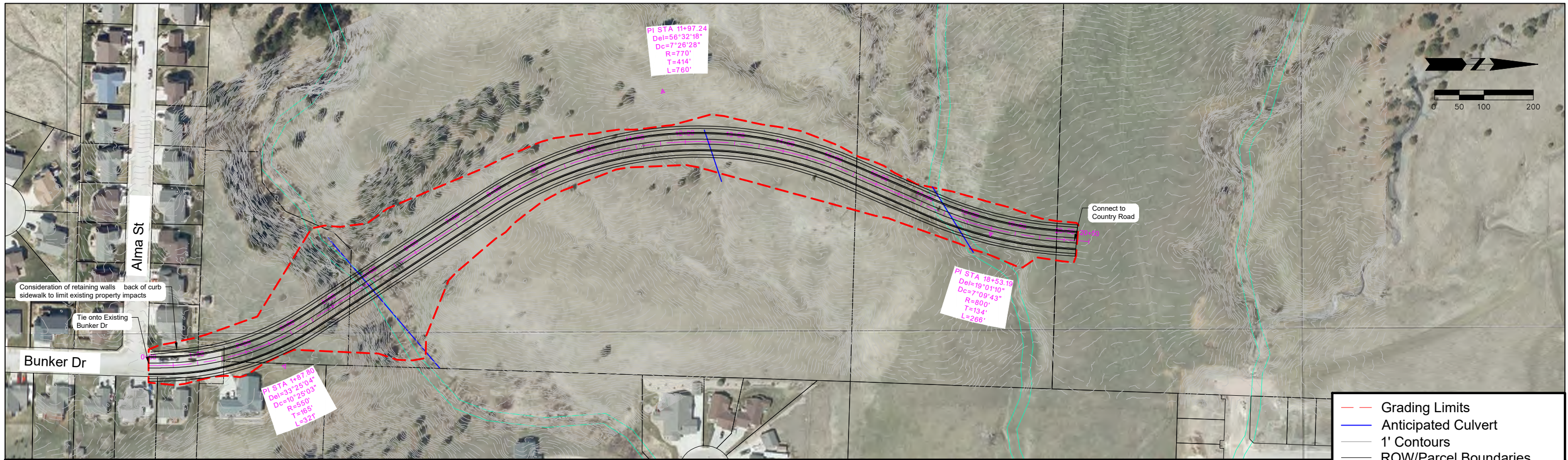
Isometric looking northwest at station 0+00



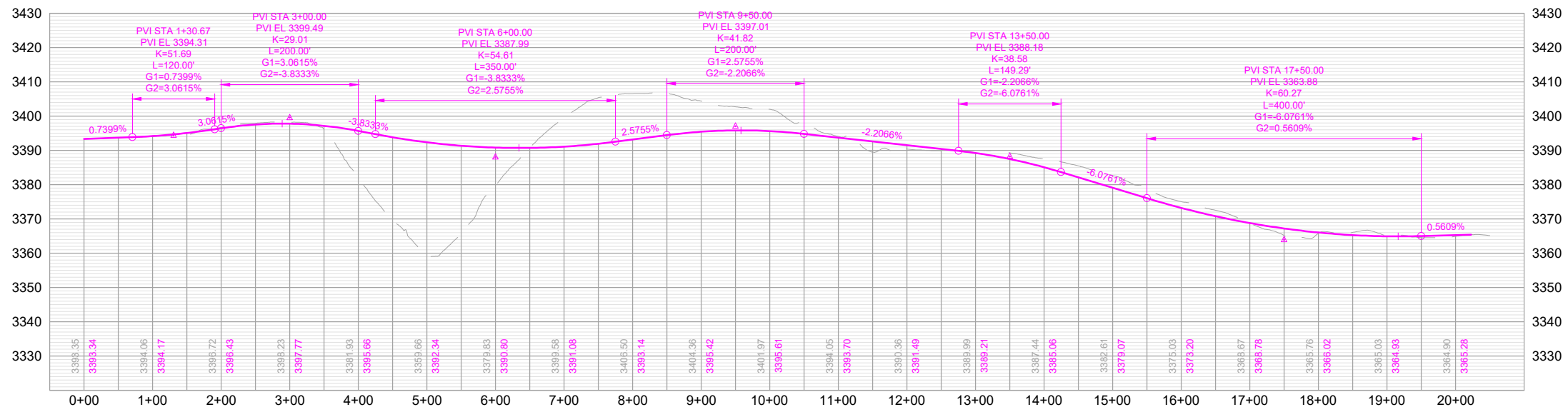
Segment Overview

### Proposed Typical Section 3 Lane Collector





- Grading Limits
- Anticipated Culvert
- 1' Contours
- ROW/Parcel Boundaries
- Wetland/Fema Boundaries



# N LaCrosse Street

## Seger Drive to Country Road

Classification: Minor Arterial

Corridor Length: 5,223 FT

### Estimated Quantities

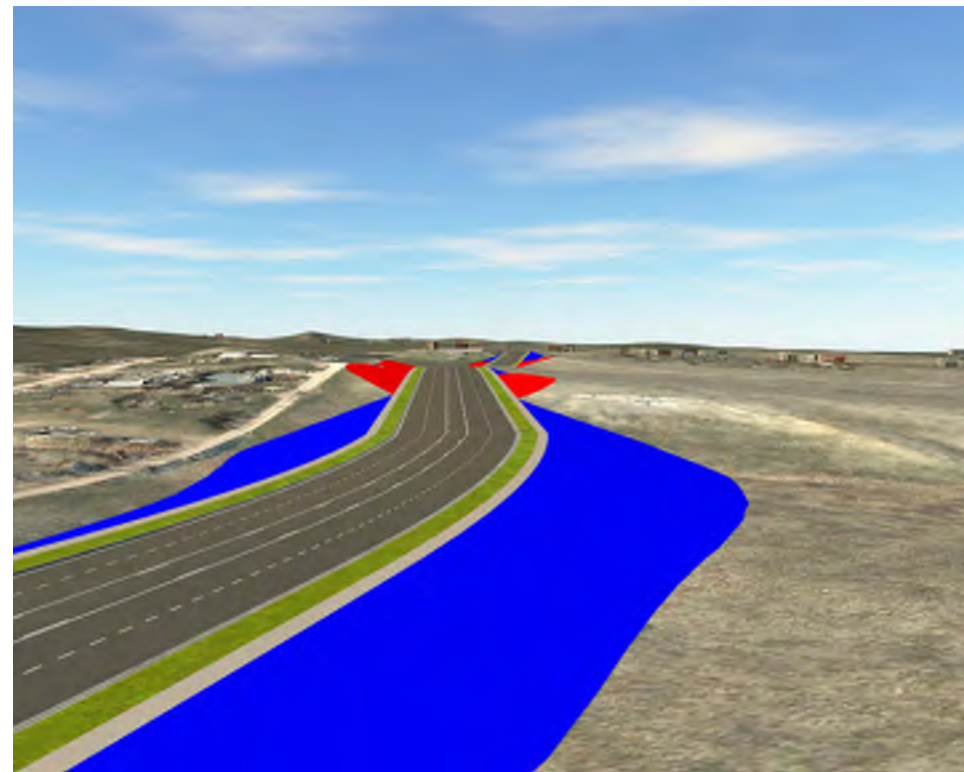
Road Surface: 33,660 SY

Earthwork Cut (Red): 37,136 CY

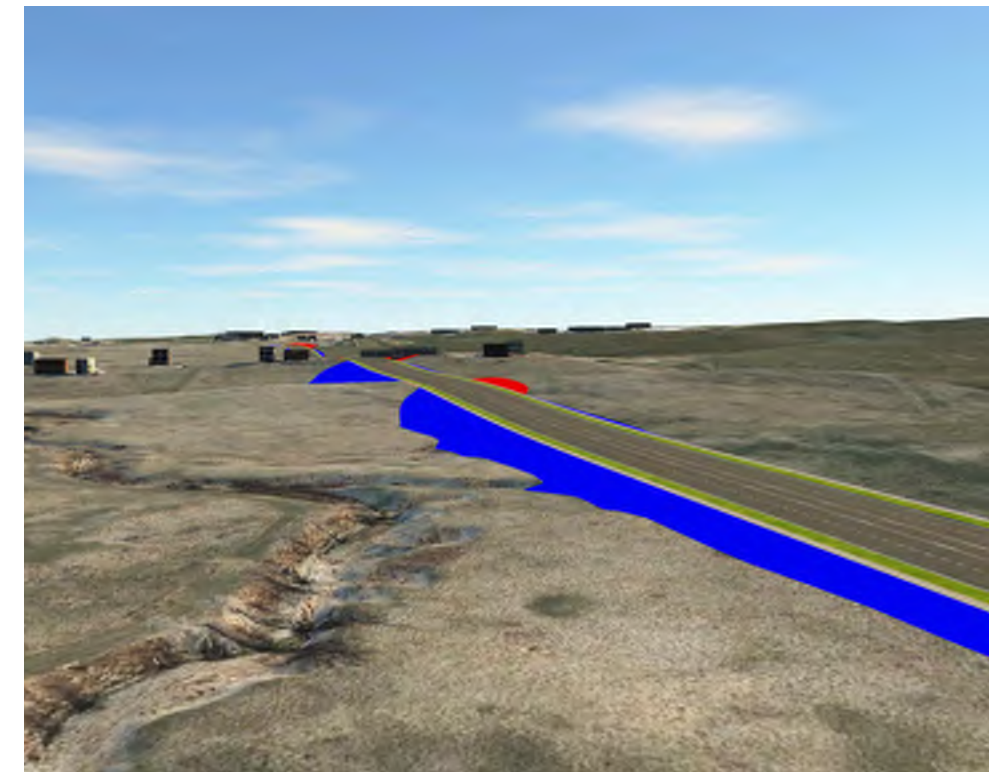
Earthwork Fill (Blue): 190,143 CY

### Segment Considerations:

- Proposed segment is extension of existing 5 lane section.
- Design speed – 45 MPH.



Isometric looking north at station 1+00



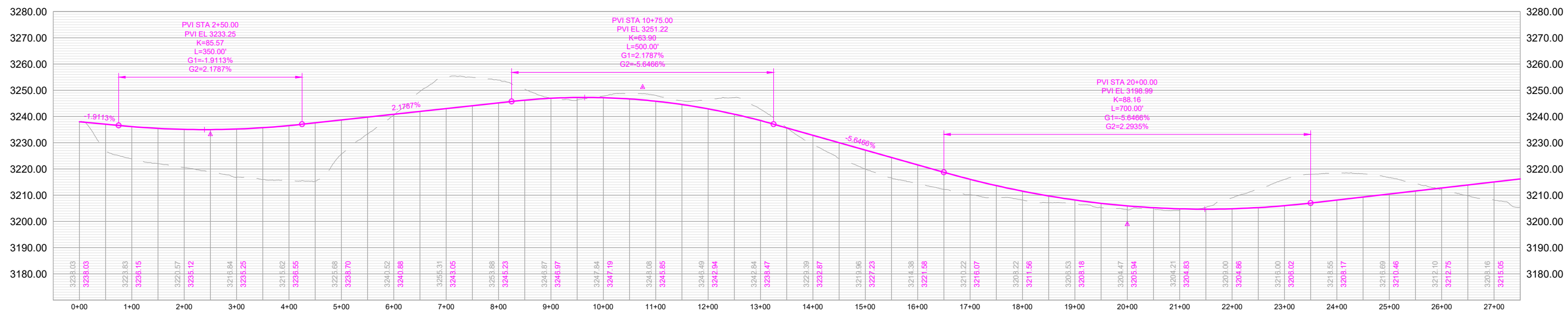
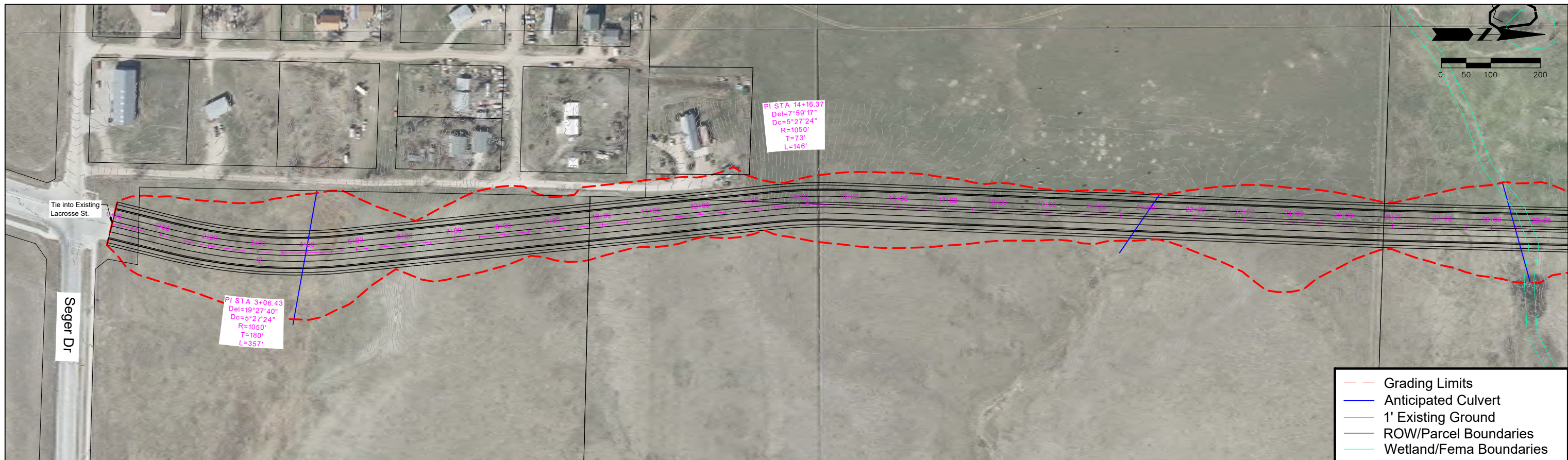
Isometric looking south at station 51+00



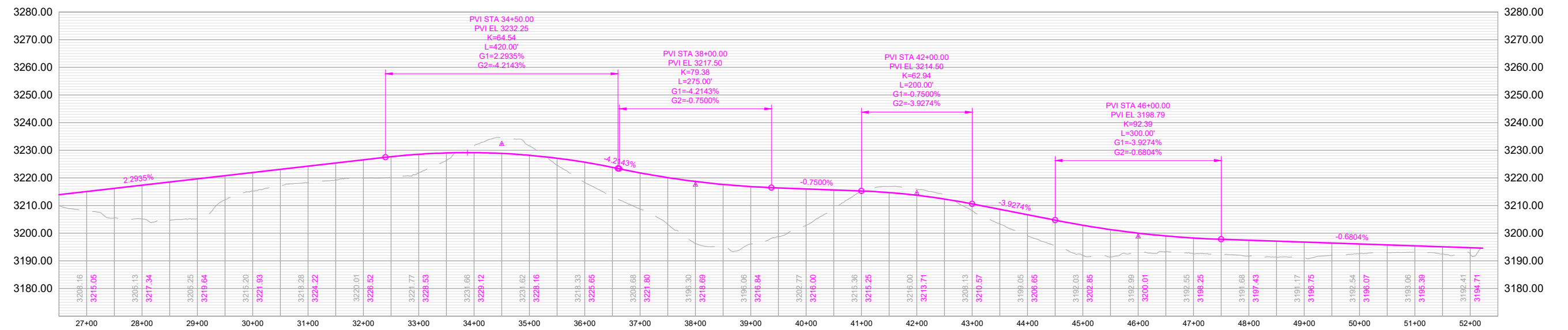
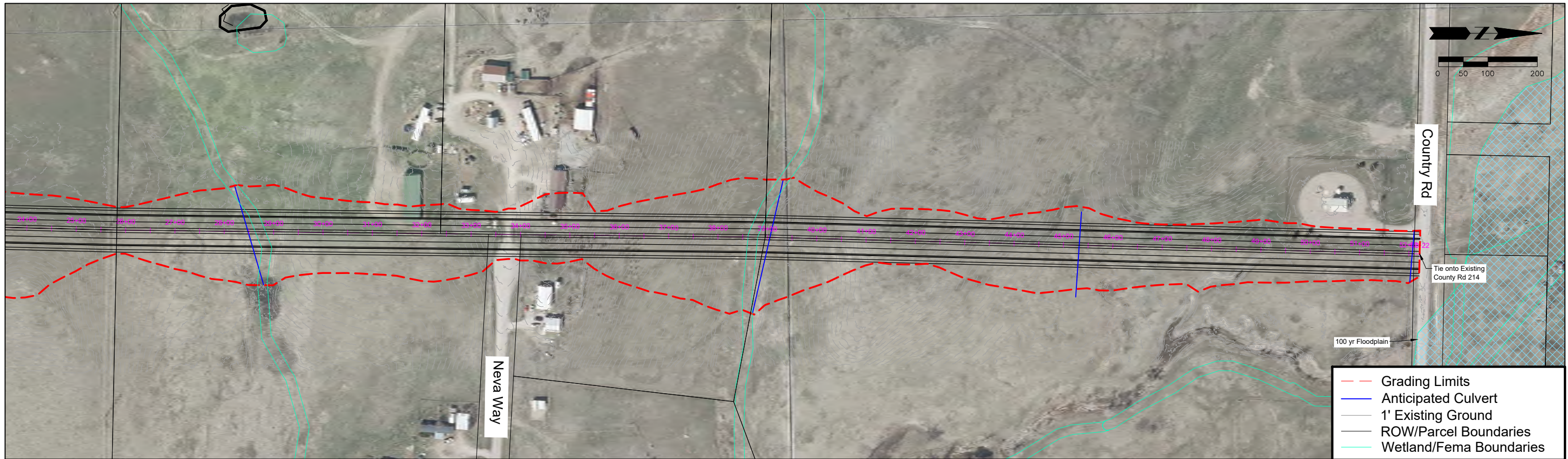
Segment Overview

### Proposed Typical Section 5 Lane Minor Arterial









# Neva Way

## Haines Avenue to LaCrosse Street

Classification: Collector

Corridor Length: 5,371 FT

### Estimated Quantities

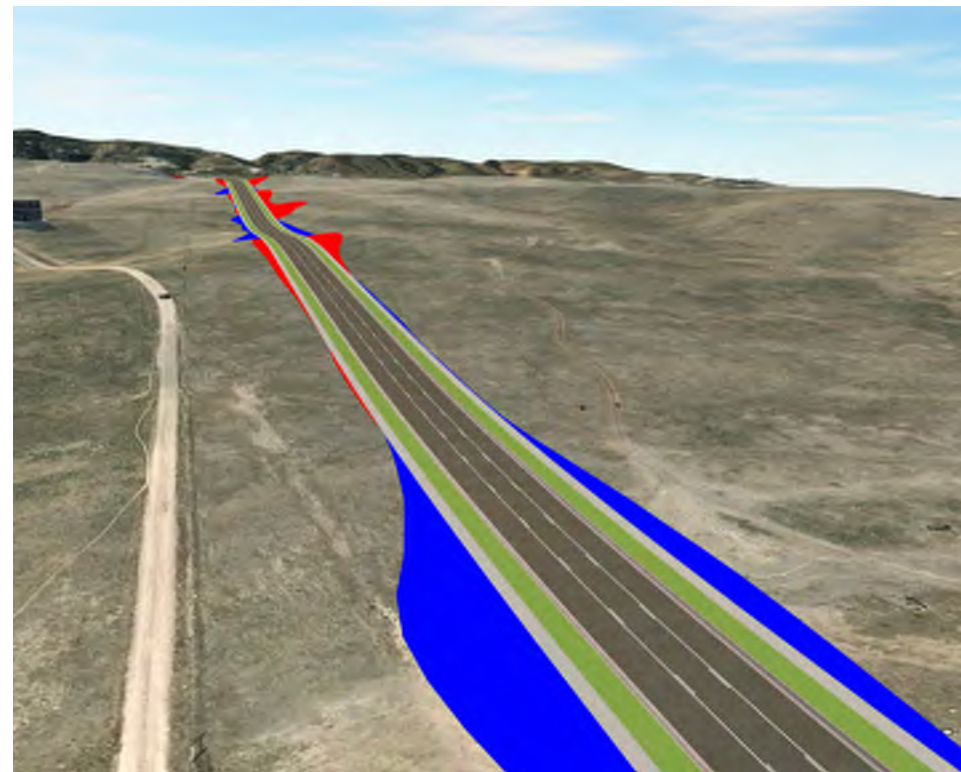
Road Surface: 8,409 SY

Earthwork Cut (Red): 68,102 CY

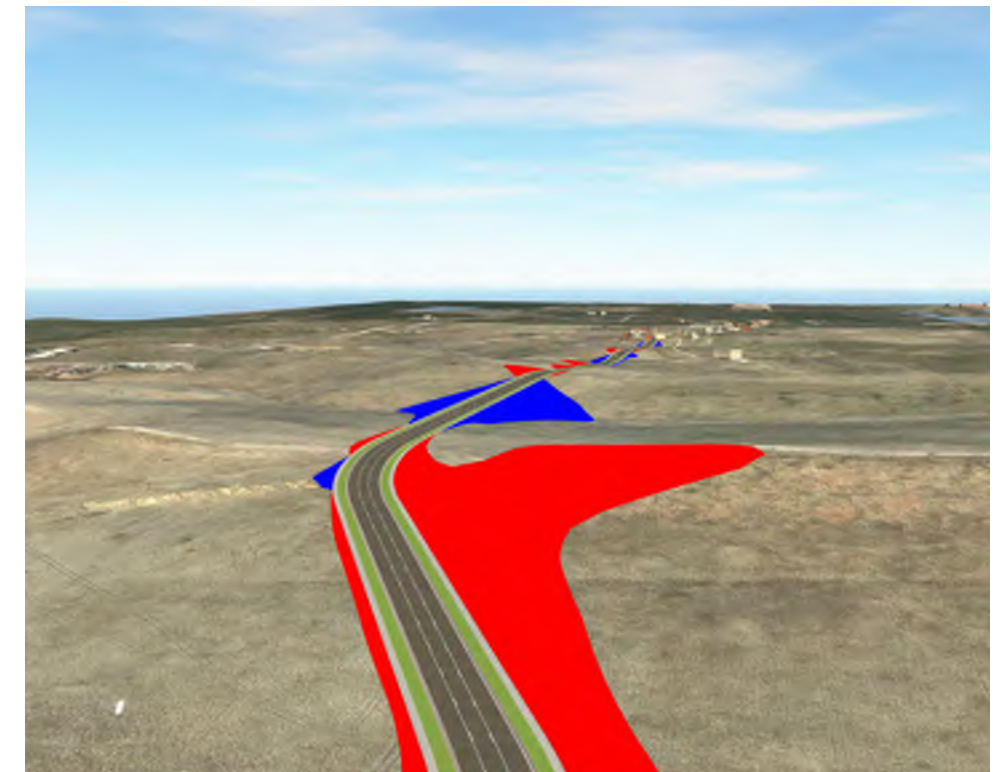
Earthwork Fill (Blue): 121,750 CY

### Segment Considerations:

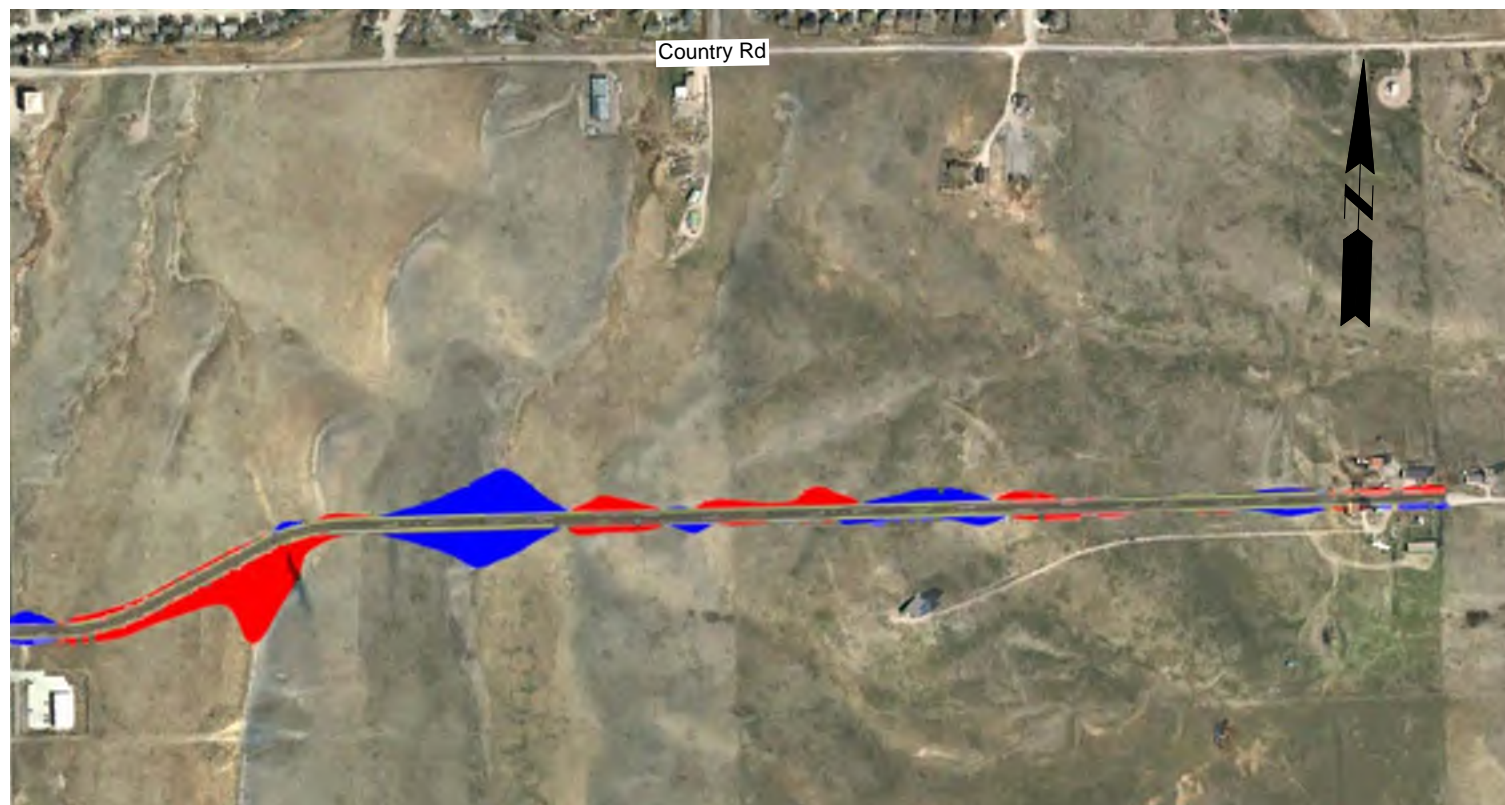
- Design speed – 35 MPH.



Isometric looking west at station 48+00

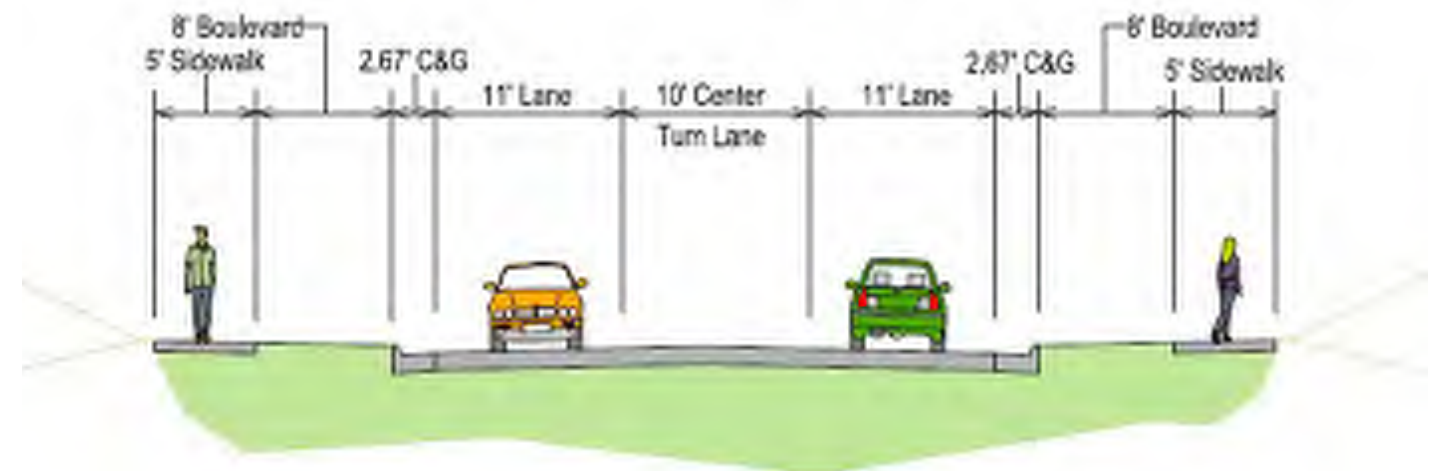


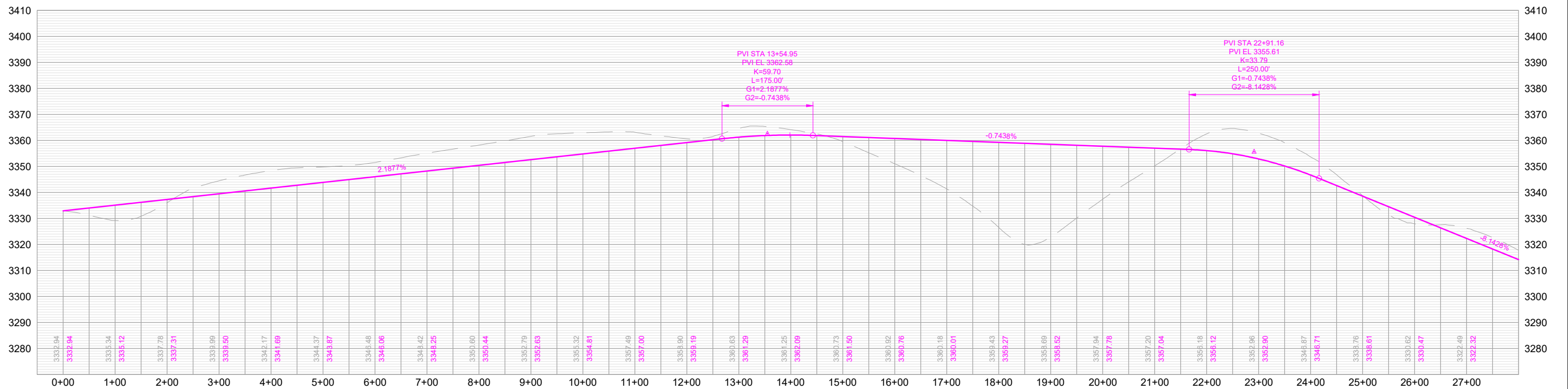
Isometric looking east at station 9+00

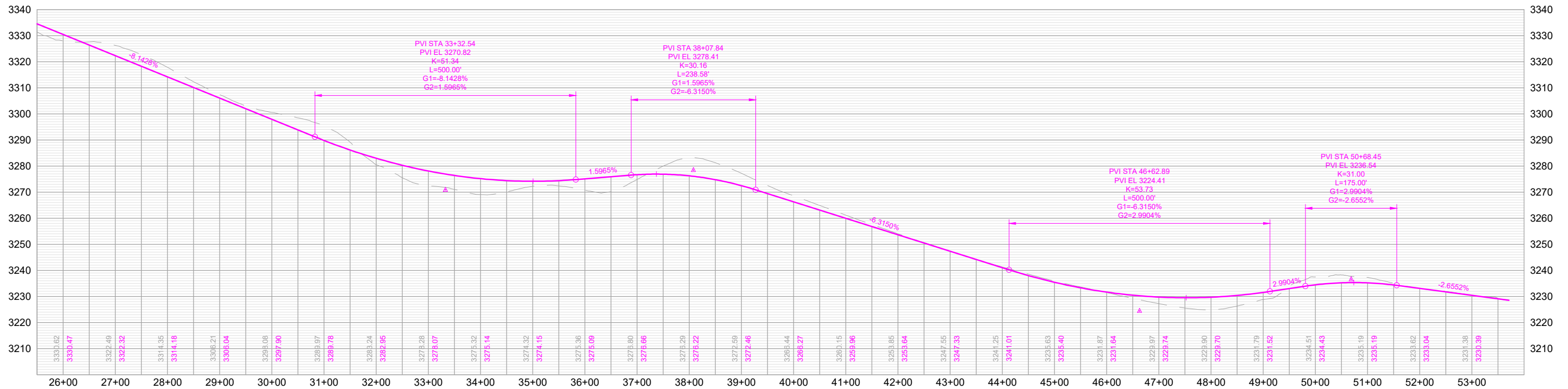
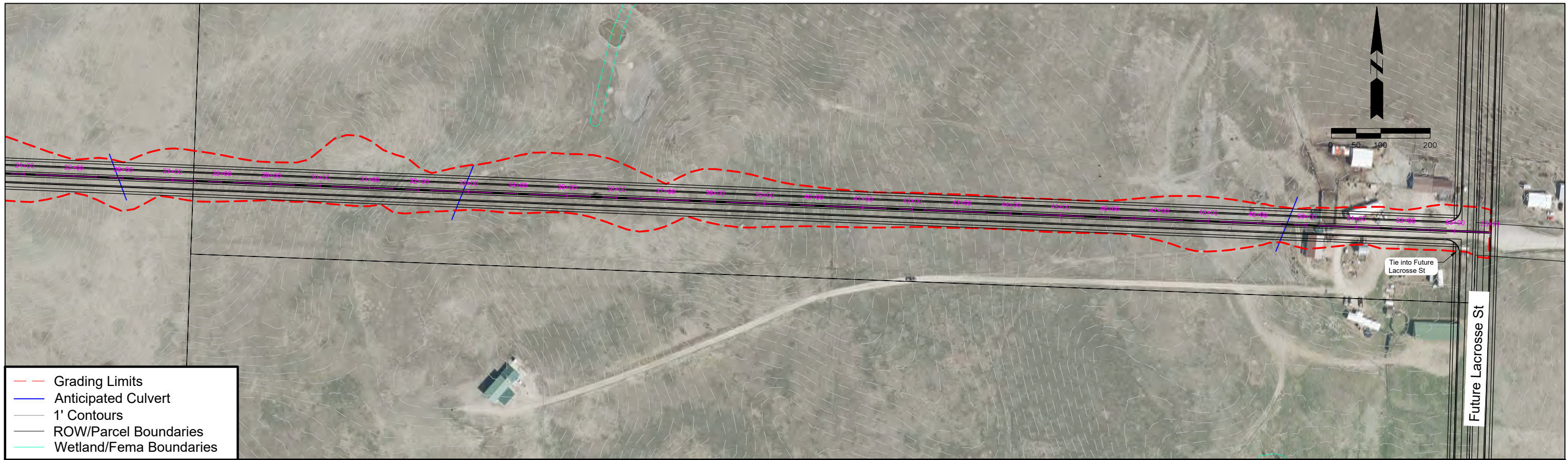


Segment Overview

### Proposed Typical Section 3 Lane Collector







# Neva Way

## 143rd Avenue to Country Road

Classification: Collector/Minor Arterial

Corridor Length: 5,019 FT

### Estimated Quantities

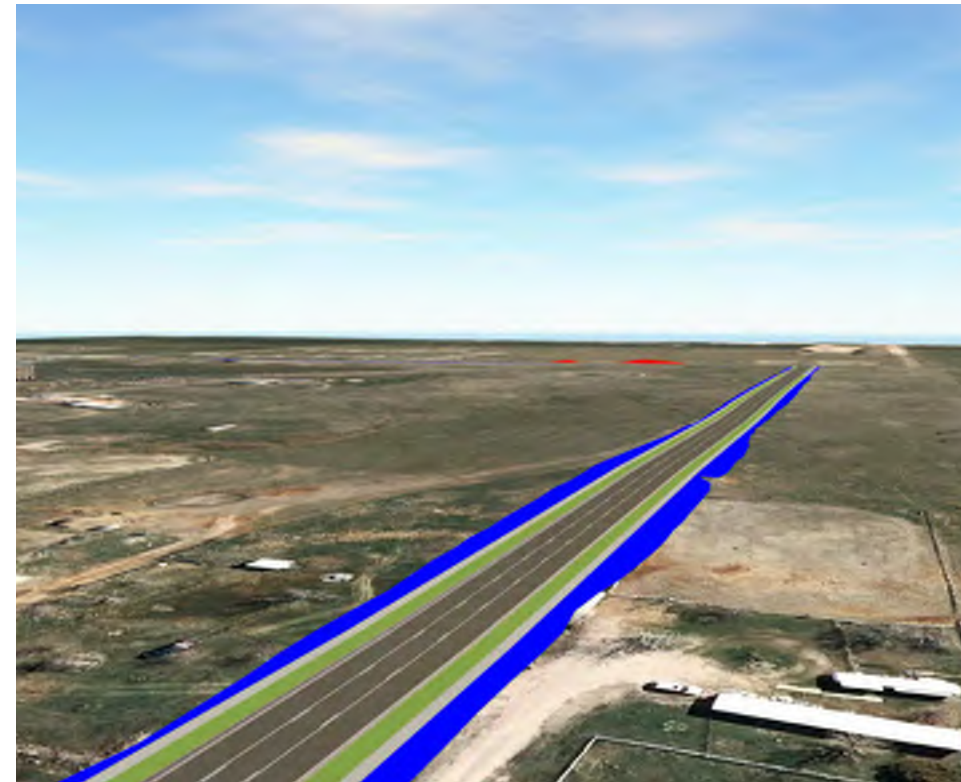
Road Surface: 18,900 SY

Earthwork Cut (Red): 2,672 CY

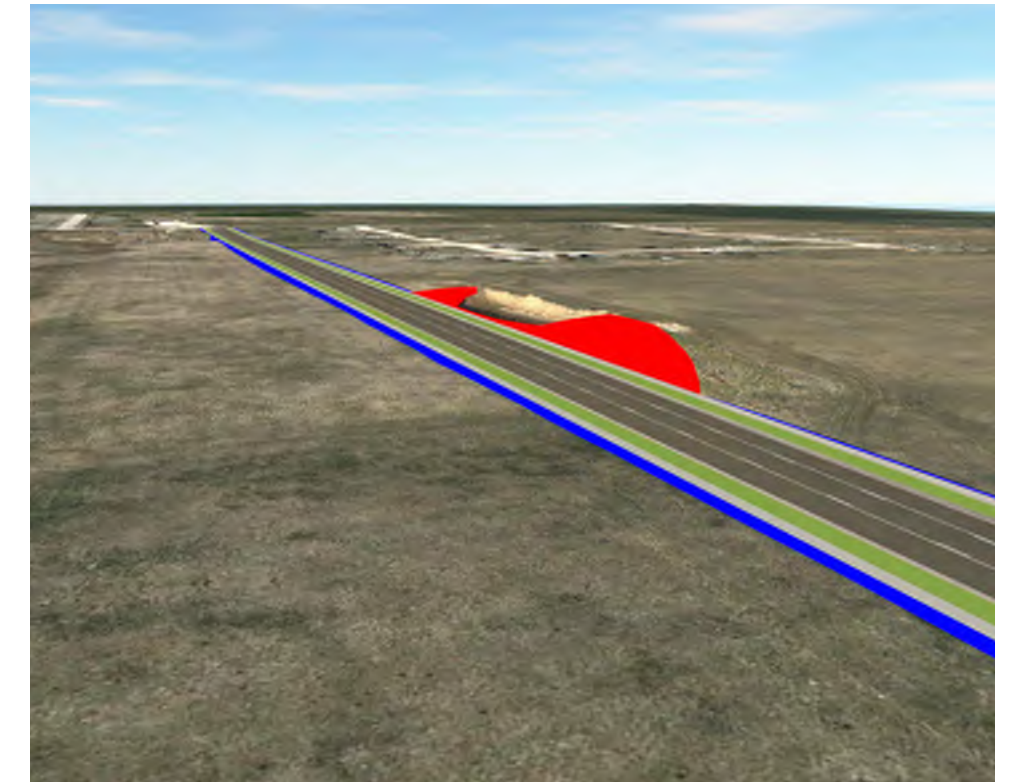
Earthwork Fill (Blue): 38,155 CY

### Segment Considerations:

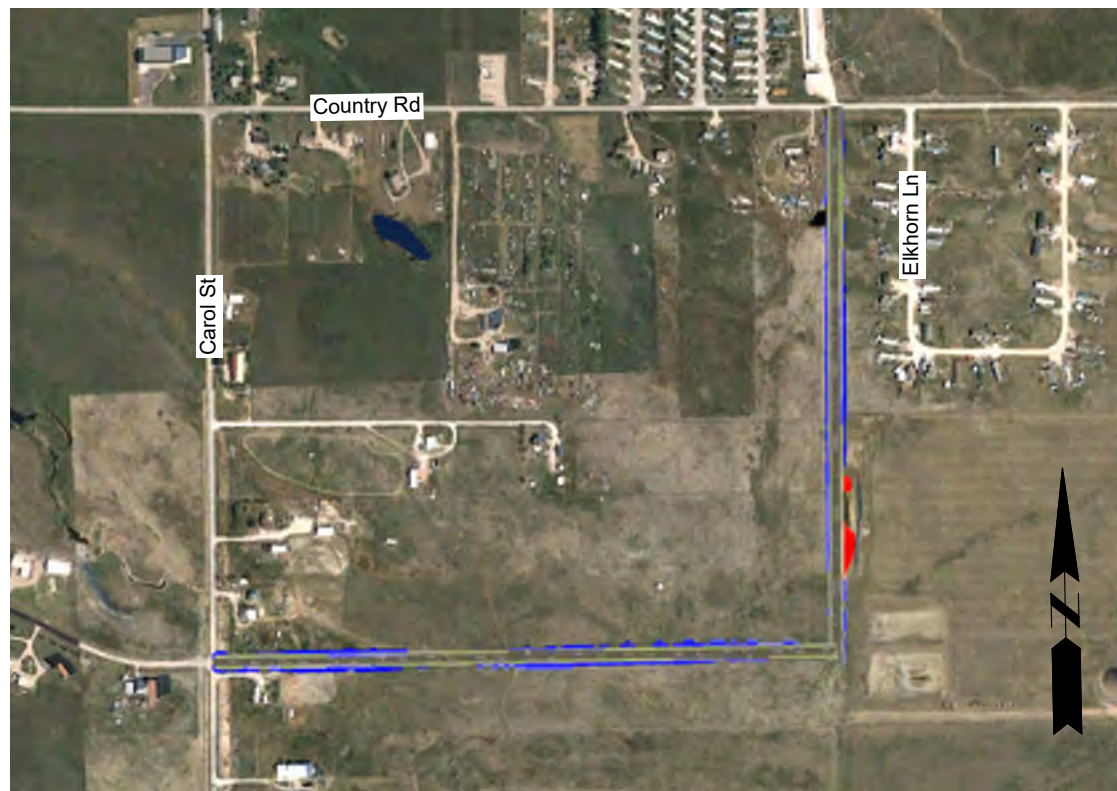
- North-South portion will likely be called "Tish Boulevard."
- Design speed – 35 MPH and 45 MPH.



Isometric looking east at station 1+00

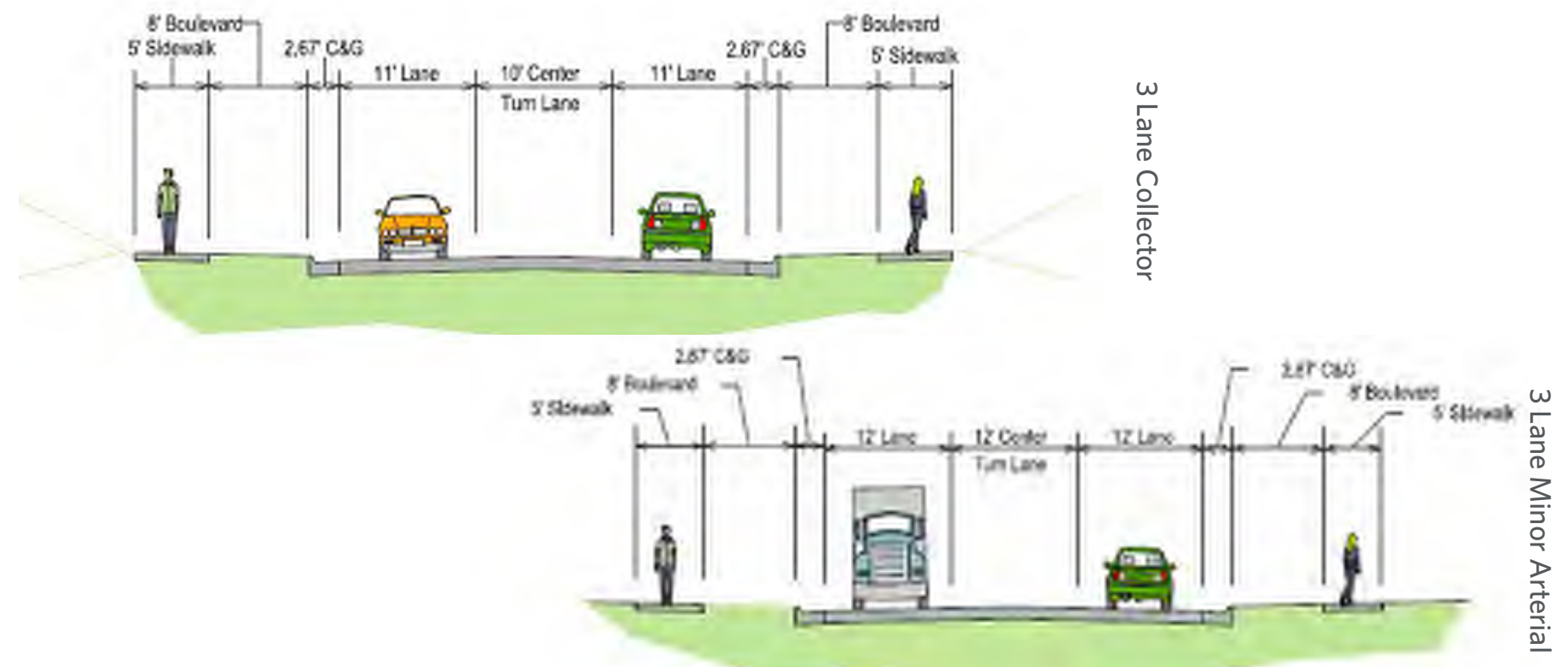


Isometric looking northeast at station 3+00



Segment Overview

### Proposed Typical Sections



3 Lane Collector

3 Lane Minor Arterial

